



**SAMSUNG C&T**



Chemicals



Steel



Energy



Materials

**The Value is Yours**

## CONTENTS

01 The Value is Yours

### Company Overview

14 CEO's Message

16 Vision

17 Samsung C&T Business Groups

18 Milestones

20 About Samsung

### Business Overview

24 Global Business Sites

26 Chemicals

28 Steel

30 Energy

32 Materials

34 New Businesses

36 Environmental, Social, and Governance

40 Global Network



### For more information

Visit [trading.samsungcnt.com](http://trading.samsungcnt.com) for more information about our company and businesses. You can also view a brief video introduction by scanning the QR code above with your mobile device.

## The Value is Yours

**At Samsung C&T, we are in the business of creating value. With eight decades of experience in connecting buyers and sellers around the globe, we have built the deep know-how, network, and relationships that now enable us to deliver greater value to our customers and partners in every deal and investment we make.**

Trading & Investment

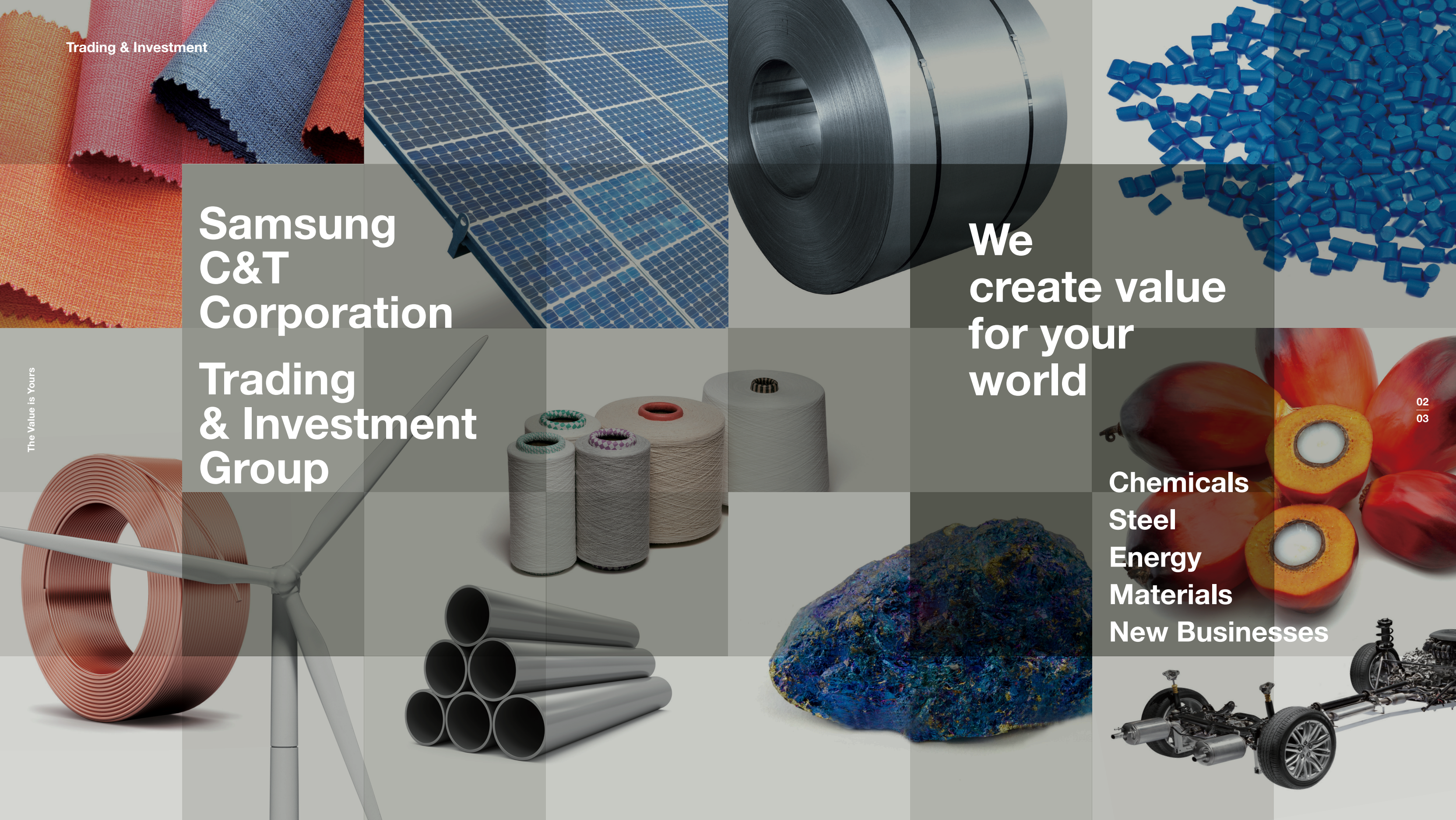
Samsung  
C&T  
Corporation

Trading  
& Investment  
Group

We  
create value  
for your  
world

The Value is Yours

Chemicals  
Steel  
Energy  
Materials  
New Businesses



At Samsung C&T, we globally source and supply the materials and solutions that add value to every aspect of life. Backed by a global network and logistics infrastructure, our extensive market and product intelligence enables us to deliver key commodities such as polymers, methanol, and fertilizers as well as specialized chemicals that meet the needs of industries ranging from semiconductors to mining.




The Value is Yours

 Chemicals

# Value that creates



 At Samsung C&T, we globally source and supply the cold rolled, hot rolled, and stainless steel that shape the world. Our partnerships with major steelmakers worldwide and  our own network of precision stainless steel mills and steel service centers enable us to deliver exceptional quality,  service, and value to manufacturers around the world.

The Value is Yours

 Steel

# Value that strengthens

 Energy

# Value that empowers

At Samsung C&T, we globally source and supply a full line of energy products and solutions that meet today's and tomorrow's energy needs. Our global network and partnerships in resource-rich regions worldwide supply liquid natural gas and biofuels to power utilities around the world. We are also active in the renewables field through the operation of a gigawatt-class wind and solar power cluster in Canada and ongoing development of solar PV projects in North America.



+ Materials

# Value that transforms

At Samsung C&T, we create global value chains that enrich life. Our involvement in the global fashion industry encompasses everything from raw materials and fabric to garments and fashion infrastructure. We source and supply metals such as copper and cobalt that will play an essential role in powering tomorrow's electric vehicles. We also help businesses utilize their resources more effectively with tailored



IT equipment and materials remarketing services and supply chain management solutions.



Trading & Investment



The Value is Yours

## We create value for your world

At Samsung C&T, we are uniquely equipped to help you deliver greater value to your customers and markets. Read on to learn more about what we do and how our proven global experience and expertise can open profitable new frontiers of value in chemicals, steel, energy, materials, and new businesses for you.

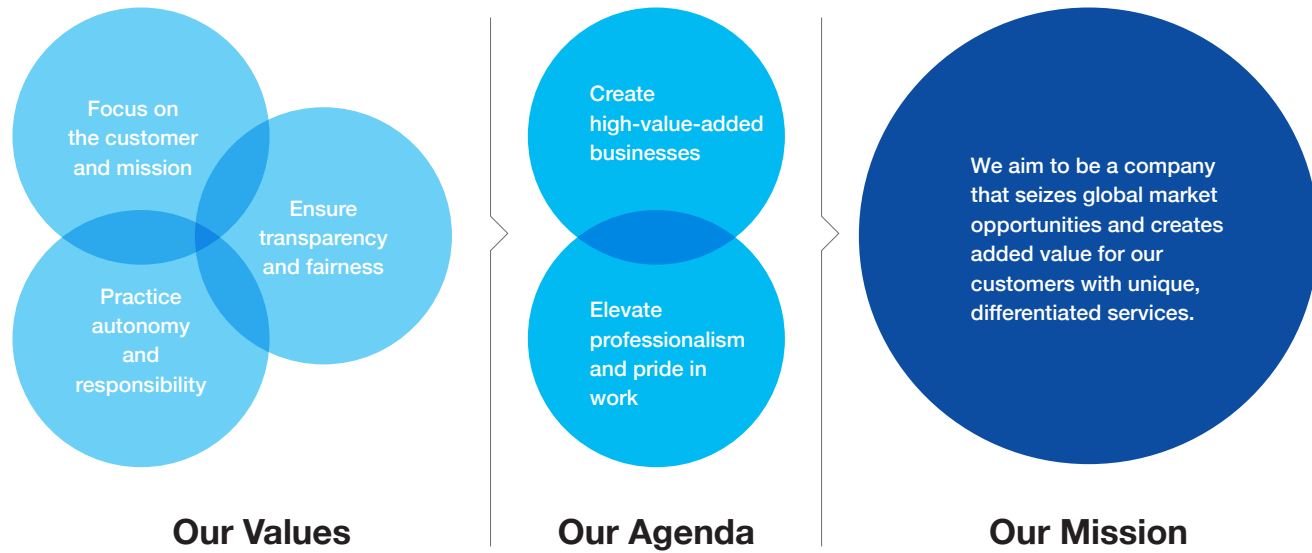
Over the past 80 years, our unwavering focus on creating value for our customers has made us a respected and valued partner around the globe. Today, we are building on that solid foundation to create even greater value for more customers in more places in innovative new ways.

# Samsung C&T Corporation, Global Value Creator



# Vision: Global Value Creator

The Value is Yours

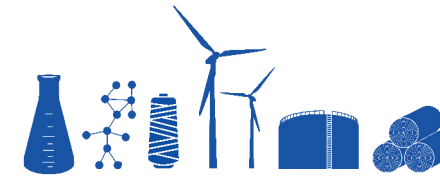


**“We Create Value” is our motto**

Our goal is to create greater value for our customers, employees, and communities by tapping the limitless possibilities of imagination and entrepreneurship in diverse fields and markets to make dreams come true.

## Samsung C&T Business Groups

### Trading & Investment Group



We are a global trader and solutions provider with 73 offices in 43 countries. Over the past eight decades, our single-minded focus on creating greater value for our customers has transformed us from the proprietor of a small local store to a valued global business partner.

**Business Area**  
Chemicals | Steel | Energy | Materials | New Businesses

### Engineering & Construction Group



We are an elite, global builder with the skills, technology, and experience to take on the world’s most challenging projects. Our extensive portfolio includes major global landmarks such as the Burj Khalifa in Dubai, the world’s tallest building to date.

**Business Area**  
Building | Civil Infrastructure | Plant | Housing

### Fashion Group



We are a top South Korean fashion house with global ambitions. Beyond our extensive brand portfolio, we are making an impact in the industry by sharing fashion and design trend research and creating opportunities that help aspiring young designers make their dreams come true.

**Business Area**  
SPA | Men’s Suits | Traditional Casual

### Resort Group



We are in the business of creating environments that entertain and delight. In addition to operating Everland Resort—South Korea’s largest theme park—and five prestigious golf clubs, we provide landscaping design and management services for residential and commercial properties nationwide, creating world-class places to relax, live, and work.

**Business Area**  
Theme Parks | Golf | Landscaping

At Samsung C&T,  
we have been creating  
a world of value for  
more than 80 years.

# Then & Now

Our journey to create value began back in 1938 as a local trader of produce, dried seafood, and noodles that we produced onsite. From those humble beginnings in Daegu, South Korea, we steadily grew and prospered as we expanded our product portfolio, delivering value that quickly earned the trust of regional customers.



Over the past 80 years, our commitment to delivering value has helped us grow from a trusted local trader to a respected global trader and solutions provider. Today, our 5,000-strong workforce spanning 43 countries across the globe works around the clock to create greater value and prosperity for our customers and partners. And the world.

At Samsung C&T,  
we have been creating  
a world of value for  
more than 80 years.

# Then &

Our journey to create value began back in 1938 as a local trader of produce, dried seafood, and noodles that we produced onsite. From those humble beginnings in Daegu, South Korea, we steadily grew and prospered as we expanded our product portfolio, delivering value that quickly earned the trust of regional customers.



## 1930s~1990s

### Accelerating Growth as South Korea's No.1 Global Trader

- 1938 03 Founded as Samsung Sanghoe in Daegu, South Korea
- 1951 01 Incorporated as Samsung Mulsan Co., Ltd.
- 1953 09 Established Tokyo Office
- 1963 11 Established Hong Kong Office
- 1964 01 Established of New York Office
- 1966 08 Began export of sewn goods to Nigeria
- 1968 06 Won USD 6.14 mil order for 20 tuna fishing vessels from Taiwan
- 1969 05 Exported military uniform fabric to Ethiopia
- 1972 11 Established Frankfurt Office
- 1975 03 Signed contract for deferred payment export of 1,500 railway freight cars to New Zealand
- 05 Designated South Korea's 1st general trading company
- 12 Launched initial public offering on the Korea Stock Exchange

- 1976 01 Won USD 101 mil contract for military uniforms from Saudi Arabia
- 1978 01 Joined general development projects in Ghana
- 08 Exported 12 hospital vessels to Libya
- 1979 06 Completed construction of 6 liquid chemical product storage tanks in Ulsan, South Korea
- 1981 07 Won USD 75 mil order for an oil storage facility in Libya
- 1982 03 Became first South Korean company to issue corporate paper (USD 25 mil) in the US
- 05 Won USD 50 mil contract for construction of refinery plant in Libya
- 1983 08 Won USD 27 mil order for 8 oil storage tanks in Kuwait
- 1984 01 Won USD 35 mil order to supply 8 drilling and supply ships to Indian National Oil & Gas Company

- 1986 12 Won USD 88 mil order to supply 30,000 ton-class vessels to Malaysia
- 1987 01 Won USD 140 mil order to supply 6 crude oil tankers to Kuwait National Oil Company
- 03 Won USD 65 mil order to supply railway rolling stock to Nigeria
- 1988 01 Won USD 25 mil Economic Development Cooperation Fund-backed order for railway rolling stock to Nigeria
- 08 Exported USD 31 mil spinning plant to Indonesia
- 12 Won USD 70 mil order for an ethylene oxide/ethylene glycol project in Indonesia
- 1991 09 Began imports of Malaysian LNG, a first for a South Korean company
- 1993 08 Won order for construction of the Zeskaskan hospital in Kazakhstan
- 1994 10 Won USD 225 mil order for and an ethylene plant project in Thailand
- 1995 12 Merged with Samsung Construction Co., Ltd.
- 1996 08 Began construction of Springvale coal mine in Australia
- 1997 09 Acquired stainless steel maker Otelinox in Romania
- 1998 12 Won order for 2nd Tema Oil Refinery project in Ghana

## 2000s~2020s

### Aiming to be among the World's Best

- 2003 09 Won order for e-government system in the Philippines
- 2006 04 Signed agreement with the Pearl S. Buck Foundation Korea to support children
- 2007 01 Supplied medical equipment to Panama
- 2008 01 Acquired Japanese precision stainless steel maker Myodo Metal
- 01 Acquired Malaysia Samsung Steel Center in Malaysia
- 02 Opened POSS-SLPC steel service center in Slovakia
- 04 Established Samsung Precision Stainless Steel (Pinghu) in China
- 04 Acquired two palm plantations covering 24,000 hectares in Indonesia
- 2009 05 Won order for 28 boarding bridges from the British Airports Authority
- 09 Signed agreement with Plan International to sponsor impoverished children around the world
- 2010 01 Won order for the Ontario wind and solar power cluster project in Canada
- 08 Won order for the Norte II combined-cycle power plant project in Mexico
- 2003 09 Won order for e-government system in the Philippines
- 2011 08 Signed 1st and 2nd phase power purchase agreements with the Ontario Power Authority in Canada
- 11 Completed construction of the Manzanillo LNG terminal in Mexico
- 2013 12 Won order for the BHP Kelar gas-fired combined-cycle power project in Chile
- 2014 09 Named a member of the 2014 Dow Jones Sustainability Index (DJSI) World Index
- 2015 08 Won order for the construction of the National Diagnostic and Treatment Center in Mongolia
- 09 Merged with Cheil Industries

- 2017 10 Won order for the National Children's Medical Center in Uzbekistan
- 2018 04 Completed construction of the Ontario wind and solar power cluster in Canada
- 2019 05 Received RSPO certification for Indonesia palm plantations
- 11 Won order for the construction of a children's hospital in Pakistan
- 2020 10 Announced exit from coal business
- 10 Received overall "A" grade in ESG evaluation by KCGI for 5th consecutive year
- 2021 02 Named Korea's most respected company by KMAC for 17th consecutive year

# Now

Over the past 80 years, our commitment to delivering value has helped us grow from a trusted local trader to a respected global trader and solutions provider. Today, our 5,000-strong workforce spanning 45 countries across the globe works around the clock to create greater value and prosperity for our customers and partners. And the world.

Ranked the world’s 5th most valuable brand in 2020 by Interbrand, Samsung is today South Korea’s largest multinational group of companies. The diversified portfolio of Samsung businesses spans a broad range of fields including electronics, financial services, trade, engineering and construction, fashion, leisure, advertising, security, and healthcare.

The Samsung story began with the founding of Samsung Sanghoe—the forerunner of today’s Samsung C&T Corporation—back in 1938. In the early 1950s, the newly renamed and incorporated Samsung Corporation entered the business of international trade in earnest. Shortly after the Korean War, Cheil Jedang and Cheil Industries were founded to produce sugar and textiles, respectively, heralding the dawn of South Korea’s industrial modernization and the beginning of the end of the nation’s reliance on imports for basic consumer goods.

Samsung entered the electronics business in the late 1960s, adding chemicals, machinery, and semiconductors during the 1970s. In 1983, Samsung Electronics developed the world’s first 64-kilobit DRAM chip, seizing the lead in the global memory industry that it has yet to relinquish. During this period of expansion and innovation, Samsung announced the “New Management” initiative in 1993. Focused on fundamental change and quality-driven management, the initiative laid the foundation for Samsung’s ascent into the ranks of the world’s top conglomerates over the rest of the decade.

Since the turn of the 21st century, Samsung has increasingly focused on the themes of sustainability and social responsibility. The Samsung mission statement declares, “We will devote our human resources and technology to create superior products and services, thereby contributing to a better global society.” As this multinational family of blue-chip companies lives this mission 24/7 around the globe with a shared aspiration to be the world’s best in their respective businesses, Samsung is delivering an expanding world of value that knows no borders.

## Samsung Companies

Samsung is a proud global innovator and leader. Represented by Samsung C&T Corporation and a host of other world-class affiliates, the Samsung business portfolio spans consumer electronics, semiconductors, financial services, trade, engineering and construction, leisure, advertising, biopharmaceuticals, and much more.

---

### Electronics Industries

- Samsung Electronics
- Samsung SDI
- Samsung Electro-Mechanics
- Samsung SDS
- Samsung Display

---

### Financial Services

- Samsung Life Insurance
- Samsung Fire & Marine Insurance
- Samsung Securities
- Samsung Card
- Samsung Investment Trust Management
- Samsung Venture Investment

---

### Other Fields

- Samsung Engineering
  - The Shilla Hotels & Resorts
  - Cheil Worldwide
  - S1 Corporation
  - Samsung Biologics
-

**At Samsung C&T, we are in the business of helping businesses create greater value around the world. Our broad portfolio of services encompasses trade and solutions in the fields of chemicals, steel, energy, materials, and new businesses.**

**How  
we create  
value**

# Global Business Sites

Beyond our global network of more than 73 offices in 43 countries, we oversee a growing portfolio of operations around the world focused on delivering even greater value to our customers.

The Value is Yours



## Chemicals

Life is enriched in countless ways by modern chemicals and materials. We are building new partnerships and value chains to bring the latest innovations to industry.



## Steel

Virtually every aspect of life is made stronger by steel. We deliver high-quality carbon and stainless steel to customers worldwide through partnerships with global steelmakers and our own network of mills and steel service centers.



## Energy

Modern economies depend on affordable energy to drive growth. We are a full-line energy provider dedicated to helping power utilities diversify their energy mix with both conventional and renewable energy sources.



## Materials

Today's markets depend on efficient value chains to deliver the products consumers want. We focus on integrating those value chains to deliver greater quality, selection, and value to our customers.



### Yeosu, South Korea

Our tank terminal facility on the country's southern coast provides on-demand delivery of key chemical products to major local coating and glue makers.



### Ontario, Canada

We completed a 1,369 MW solar and wind power generation cluster spanning 10 sites across the province in 2018.



### New York, USA

Our comprehensive fashion business support solutions help up-and-coming fashion brands succeed in the global marketplace.



### Targoviste, Romania

Our Otellinox subsidiary produces high-quality precision stainless steel products for regional automobile and power plant industries.



### Pekanbaru, Indonesia

Our two palm plantations covering 24,000 hectares on the island of Sumatra produce crude palm oil for East Asian markets.



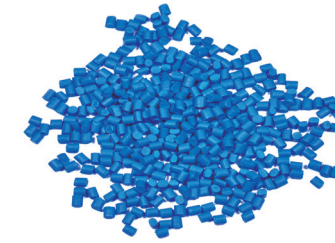
### Manzanillo, Mexico

We completed the Manzanillo LNG Terminal in 2011, a facility with a 3.72 million ton annual regasification capacity that has become the country's most-used LNG terminal.

# Chemicals



At Samsung C&T, chemicals trading has been a core part of our business since we became South Korea's first government-designated general trading company in 1975. Today our comprehensive range of products and services spanning the entire chemicals value chain combined with our global network and logistics infrastructure makes us one of Asia's top regional traders.



**Synthetic resins (Polymer resins)**  
We partner with major global suppliers to deliver the polymers that are an essential part of modern products.

## Polymers

We began trading in polymers more than 30 years ago. Today, we are an industry leader, partnering with major global petrochemical suppliers to meet customer requirements from commodities to engineering plastics as we serve more than 500 active customers in over 50 countries around the globe.

## Fertilizers

We began exporting fertilizer to global markets back in the mid 1970s. Over the years, we have steadily expanded sales to a growing list of markets with an optimal product portfolio tailored by crop, season, and region, helping customers around the globe maximize crop yields and quality.

## Fine Chemicals

We have traded in fine chemicals since the late 1980s. From the beginning, we have steadily expanded our product portfolio to specialized areas such as mining chemicals and polyurethane materials. Today, we are emerging as a global top player in mining chemicals backed by long-term sourcing agreements and customer-tailored midstream services.

## General Chemicals

We began trading in general chemicals in the 1970s. Backed by our own global network, logistics infrastructure, and extensive accumulated know-how gained as a partner in South Korea's industrial development, we today source and supply methanol and a diverse portfolio of general chemicals to customers worldwide.

## Petrochemicals

We have traded in petrochemical products since 1989, building business alliances with major global refiners and chemical firms through offices in Shanghai, Taipei, Houston, Tokyo, and other major markets around the globe. Focusing on aromatics, we are an emerging top trader serving the Asian and North American markets.

## Methanol

Our storage and logistics infrastructure enables us to source and supply methanol and other general chemicals to customers worldwide.

# Steel



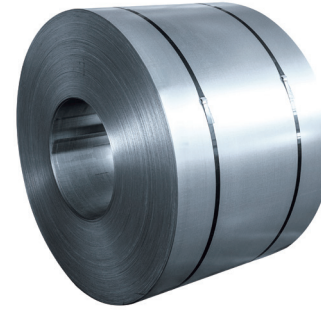
At Samsung C&T, we work with major global steelmakers to source and deliver high-quality steel products to meet the needs of the world's shipbuilding, construction, automobile, consumer electronics, and home appliance industries. Focusing on trade in hot and cold rolled flat and long products produced from both carbon and stainless steel, our value chain also includes several precision stainless steel mills and steel service centers to better serve the needs of customers in key regional markets.



The Value is Yours

### Steel Trading

We supply the full spectrum of steel products to industries and customers worldwide. Our hot rolled products are used to build ships and buildings. Our cold rolled products are found in automobiles and home electronics. Our stainless steel products are used in various industrial applications such as automobiles, electric and electronic products, and energy systems. We also operate several production and processing sites around the world to bring greater quality and value to our customers.



**Stainless steel**  
Our rolling mills in Romania and China deliver precision stainless steel products for regional auto, electronics, and other value-added industries.



**Cold rolled steel**  
Our steel service centers in Mexico, Slovakia, and Malaysia meet the steel logistics and processing needs of automakers and other manufacturers in those markets.

### Otelinox

Since acquiring a controlling interest in Romanian state-owned stainless steel maker Otelinox in 1997, we have added two rolling mills that have boosted total production capacity to 74,000 metric tons to serve the automobile and power plant industries with standard and precision stainless steel products. The key to the company's growing success over the past two decades has been the addition of high-quality precision products as well as an across-the-board upgrade of logistics, quality, and service focused on delivering total customer satisfaction. Today, the company continues to deliver on its pledge to be a top global player in the high-precision stainless steel marketplace.

### Samsung Precision Stainless Steel (Pinghu)

Equipped with modern facilities, Samsung Precision Stainless Steel (Pinghu) in Pinghu, China is capable of processing 15,000 metric tons of high-quality stainless steel annually. Since launching commercial production in 2010, the company has delivered world-class precision stainless steel products and service backed by our extensive experience in the field and a commitment to continuous R&D focused on quality and cost leadership.

### Steel Service Centers

In addition to our traditional metal trading services, we operate a network of steel service centers in key markets around the globe to provide customized processing, storage, and logistics services to local manufacturers.

POSS-SLPC, a joint-venture with Posco in Voderady, Slovakia, launched operations in 2008. Today, it meets the steel needs of electronics and automobile manufacturers across Central Europe with a capacity of 60,000 metric tons.

Malaysia Samsung Steel Center in Selangor, Malaysia was acquired in 2008. The company now serves customers in Malaysia and neighboring Southeast Asian markets with a capacity of 70,000 metric tons.

Queretaro Samsung Steel Center in Queretaro, Mexico launched operations in 2011. The company currently services customers in Mexico and other Latin American markets with an annual processing capacity of 125,000 metric tons.



# Energy

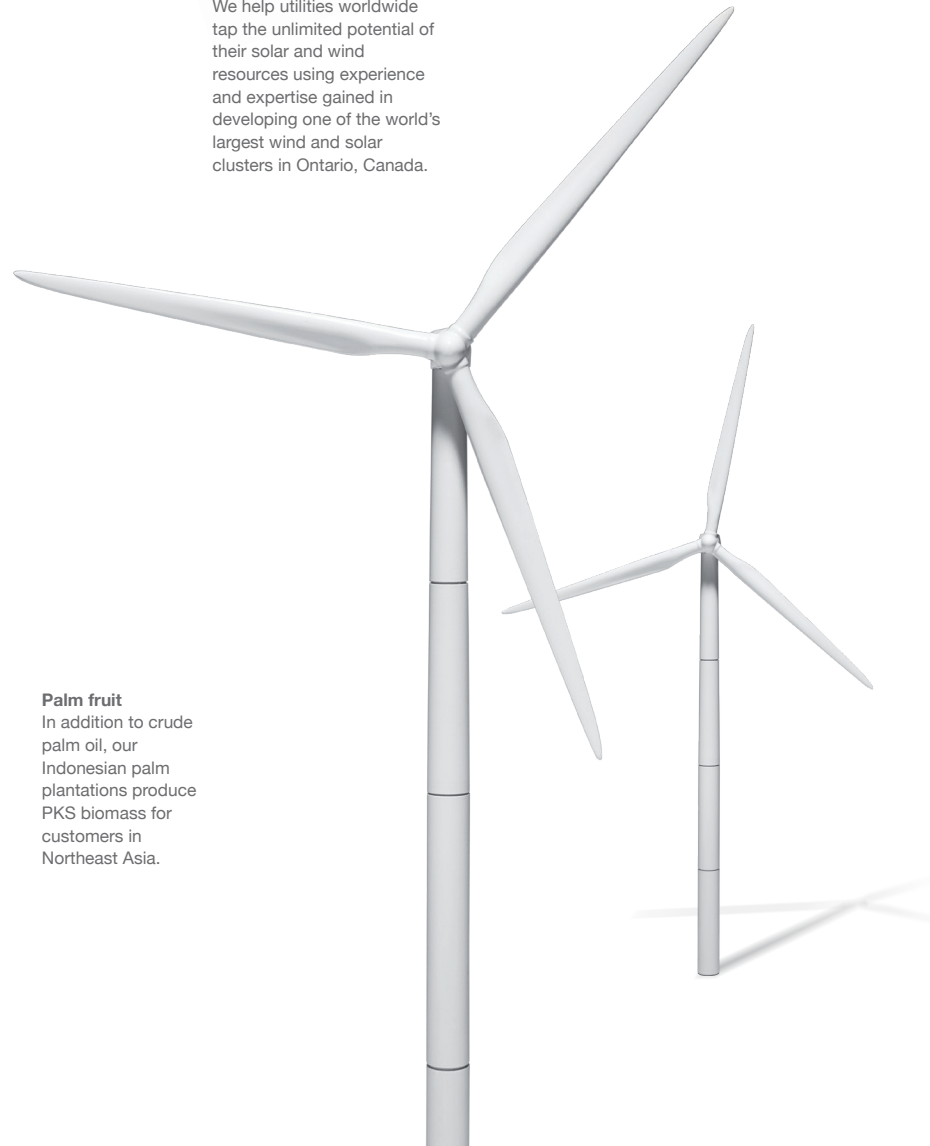


At Samsung C&T, we partner around the globe to source, develop, and deliver a sustainable supply of natural resources and solutions to help satisfy the world's energy needs. Beyond our participation in numerous consortiums to build independent power plants and other energy infrastructure, we are a full-line energy provider dealing in liquid natural gas and biofuels as well as renewable energy development through our involvement in major wind and solar projects.

The Value is Yours



**Renewable energy**  
We help utilities worldwide tap the unlimited potential of their solar and wind resources using experience and expertise gained in developing one of the world's largest wind and solar clusters in Ontario, Canada.



**Palm fruit**  
In addition to crude palm oil, our Indonesian palm plantations produce PKS biomass for customers in Northeast Asia.

## Power & Energy

We have developed and proven our project organizing and financing capabilities through decades of experience with independent power plant projects around the globe. Partnering with our Engineering & Construction Group, we have the EPC management and execution capabilities to take on the largest, most technically challenging plant projects virtually anywhere in the world.

In recent years, we have executed several build-own-operate consortium projects in Latin America. These include the 433 MW Norte II gas-fired combined-cycle power plant in Mexico completed in 2013 and the 517 MW Kelar gas-fired combined-cycle power plant in Chile completed in 2016.



Kelar gas-fired combined-cycle power plant

## Renewable Energy

We entered the green energy business in earnest in 2010 when we signed an agreement with the Canadian province of Ontario to build the world's largest cluster of wind and solar power. Construction began in earnest in 2013 and the entire 1,369 MW project encompassing 1,069 MW of wind and 300 MW of solar was in commercial operation as of the first half of 2018. We are currently operating sites comprising 805 MW of the project, generating a steady long-term return on our investment. We have also completed a number of solar projects in Europe and the United States over the past decade as we continue to deliver solutions that enable customers to take full advantage of their renewable resources.

## LNG

We supply LNG from Malaysia to Korea Gas Corporation, one of the world's largest LNG importers. Following our launch of imports from Malaysia in 1991, we signed our first service and marketing agreement with Malaysia LNG in 1993, becoming the exclusive marketing agent to South Korea. This partnership currently manages long-term supply contracts totaling 3.5 million metric tons of LNG annually. We also made equity investments in natural gas liquefaction plant projects in Oman and Qatar during the 1990s, securing additional sources of this clean energy resource for the South Korean market.

Over the past decade, we have strategically expanded our expertise to cover all aspects of the LNG value chain. In 2008, we were part of a consortium that won the Manzanillo LNG Terminal project in Mexico. The onshore facility entered operation in 2012 with 300,000 cubic meters of LNG storage and an annual regasification capacity of 3.72 million metric tons. Most recently, we won another consortium build-own-operate-transfer project in Bahrain in 2015 to build an offshore LNG terminal capable of storing 174,000 cubic meters of LNG on a floating storage unit, a regasification module capable of handling 8 million metric tons annually, and the related subsea pipeline and onshore infrastructure. The facility was completed in 2020.

## Agricultural Commodities

We produce and supply refined palm oil to major customers in China and South Korea. We own and operate two palm plantations encompassing 24,000 hectares in Sumatra, Indonesia. Acquired in 2008, these operations are capable of producing more than 100,000 metric tons of crude palm oil, a versatile raw material used in a wide variety of products from cooking oil to biofuels.

We are also actively involved in the biomass field, supplying palm kernel shells (PKS) sourced from our Indonesian palm plantation operations and wood pellets sourced from Southeast Asia, Russia, and North America to power utilities in Japan and South Korea. Demand for both of these products continues to grow due to their ability to be substituted for or co-fired with coal in thermal power plants, providing both financial and environmental benefits.

**LNG**  
We help meet Korea's LNG needs through long-term supply contracts and equity investments in overseas projects.

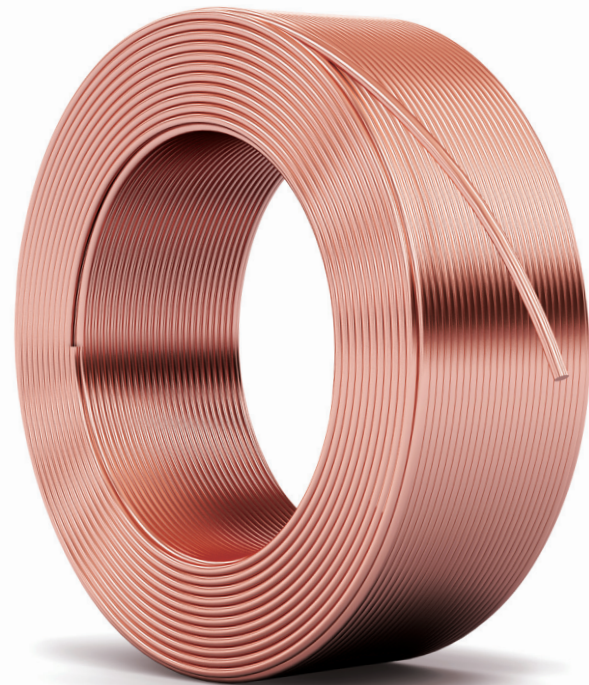


# Materials



At Samsung C&T, we build global partnerships and value chains to deliver essential materials and solutions to a wide spectrum of industries. Our extensive global expertise across the textile value chain makes us a valuable partner to both garment producers and fashion brands. We source key minerals and rare and precious metals from around the world. And we provide key materials, components, equipment, and recycling services to high-tech industries

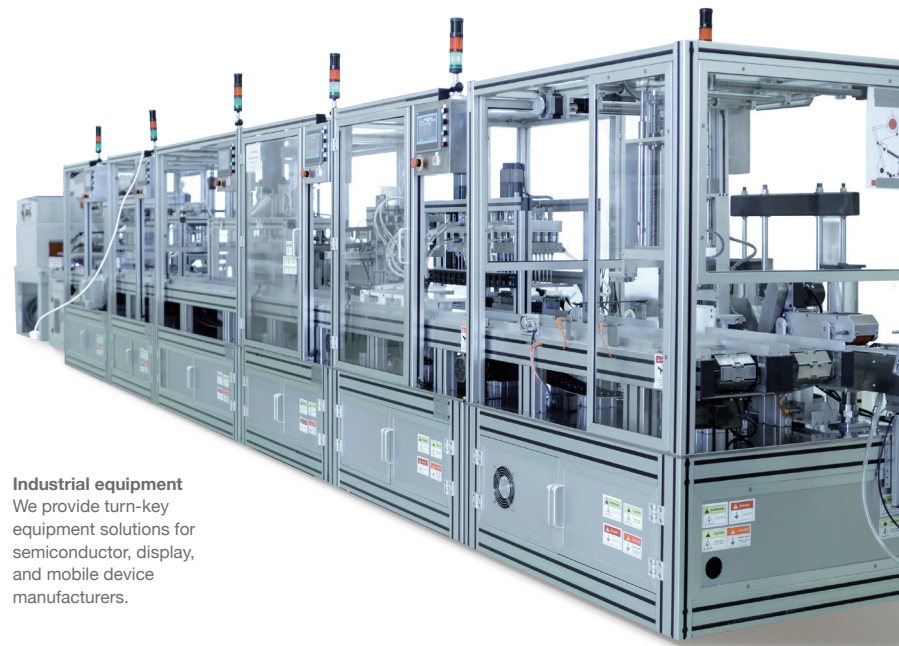
The Value is Yours



**Copper**  
We provide refined copper and copper concentrate to Asian manufacturers.



**Textiles**  
We secure quality fabrics and other textiles for customers worldwide.



**Industrial equipment**  
We provide turn-key equipment solutions for semiconductor, display, and mobile device manufacturers.

## Textiles

We source synthetic yarn and raw materials produced in China and other parts of Asia for markets worldwide. Since we began trading in textiles back in the 1970s, we have strategically expanded our role across the industry value chain by acquiring a wealth of expertise in raw material production, fabric printing, garment production, and fashion business support services.

## Fashion Business Solutions

We partner with small and medium-size fashion brands around the world to help them take their businesses to the next level. Our comprehensive business support solutions include finance, logistics, inventory management, and accounting services to help up-and-coming brands succeed in the fast-moving global fashion marketplace.

## Consumable Goods

We partner with global suppliers to deliver a quality lineup of Samsung-brand mobile phone accessories to customers worldwide through Samsung's global retail channels. We also develop and supply our branded mobile accessories worldwide through major global retail channels. Additionally, we partner with top-tier paper manufacturers in China and Indonesia to offer our branded photocopy and printing paper to companies and consumers through a variety of channels in both South Korea and Southeast Asian markets.

## Mining Consumables & Services

We serve the Asian mining industry, providing one-stop sourcing and technical support solutions for off-the-road tires and conveyor belts to companies operating in major mining regions such as Mongolia and Kazakhstan.

## Copper

We source copper concentrate and electrolytic copper from markets such as Canada, Mexico, Bolivia, Chile, and the Democratic Republic of Congo to meet the needs of leading manufacturers in China, South Korea, and Southeast Asia.

## Rare & Precious Metals

We trade rare metals such as nickel and cobalt as well as precious metals such as gold, silver, and platinum group metals. Today, we are leveraging our existing sourcing network as well as developing new sources to meet rapidly growing demand for rechargeable battery materials such as cobalt, nickel, and lithium.



**Rare metals**  
We supply cobalt and other rare metals to manufacturers around the globe.

## Industrial Equipment & Components

We provide supply chain management services for semiconductor plant hook-up components to help fab operators keep their facilities running optimally. We also connect equipment sellers and buyers in the high-tech semiconductor and display industries to remarket idle equipment and facilities. Our total sales solutions encompass equipment disassembly, packaging, shipping, and delivery to provide greater value for all parties.

## Precision Materials

We help South Korean manufacturers source electronic materials and components from suppliers worldwide. We also offer value-added recycling services to help manufacturers around the globe safely and ecologically dispose of electronic materials and components used in production.

## Advanced Materials

We ensure major semiconductor fabs in South Korea and across Asia have a stable supply of photoresists, ultra-high purity sulfuric acid, and other advanced chemicals by investing in local manufacturing subsidiaries and providing logistics and marketing services. We also serve the renewable energy sector, partnering with local specialists to deliver energy storage systems (ESS) to improve the efficiency of solar PV plants as well as sourcing and supplying key solar components such as modules and cells.

# New Businesses

At Samsung C&T, we are hard at work identifying opportunities to grow existing businesses and enter entirely new ones to drive growth in the coming years. Building on our world-class organizing, marketing, finance, market intelligence, and logistics capabilities, we are now actively developing new partnerships and opportunities in fields where megatrends are reshaping the business landscape as we build a sustainable business portfolio.

The Value is Yours



## Maturing Industries

As global commitments to low-carbon growth gain momentum, we continue to expand our focus on fields that will play important roles in tomorrow's green economy. Building on experience and expertise gained developing one of the world's largest wind and solar clusters in Ontario, Canada, we are now pursuing new renewable energy projects in North America with a focus on the US solar market. We are also looking to add the fast-growing rechargeable battery materials field to our portfolio. Here, we will be leveraging our global sourcing network to supply nickel and cobalt recovered during EV battery recycling to meet growing demand from rechargeable battery manufacturers.

## Emerging Ecosystems

The emerging digital, green, and mobility ecosystems present a wide range of business opportunities that we are well positioned to benefit from. As a company that creates value by being able to see changing business trends early and then executing on a global scale, we are now developing new business models that leverage today's rapid technical advances and market trends in fields such as B2B ecommerce, the hydrogen economy, and mobility. Here, our global network and workforce will enable us to deepen our collaborative ties with business partners from a broad spectrum of industries as we strive to create new products and services that will grow our green business portfolio.



**At Samsung C&T, we are committed to elevating our ESG strategy to the next level as we join the global response to climate change and redouble our commitment to social responsibility across our value chains. Our efforts to help create a more sustainable future focus on the following three broad areas.**

## **Shared values for a shared future**

### **Participating in global efforts to combat climate change**

In October 2020, we announced our exit from the coal business. We continue to steadily expand our green product and service portfolio with a focus on renewable energy.

### **Working to ensure happier, safer employees, partners, and communities**

Our ESG review system monitors our workplaces and partners to protect the rights of all supply chain stakeholders. We are also putting safety first, redoubling efforts to ensure workplace safety and health for our employees and partners. Last but not least, we are actively partnering with local communities to make a difference in countries around the globe.

### **Implementing a board-centric ESG management framework**

In 2020, we implemented measures to enhance corporate governance, establishing the ESG Committee composed of independent directors with backgrounds in labor, fair trade, finance and accounting, and management. We will continue to strengthen the role of the ESG Committee so it can effectively carry out its ESG monitoring and risk management mission across all facets of our operations.

## Environmental, Social, and Governance

### Serving our communities

We foster sustainable social development through a variety of programs and initiatives focused on youth, local community needs, and the environment, partnering with local firms, governments, and welfare organizations to impact communities for good wherever we do business.

#### Junior C&T Academy

Our Junior C&T Academy creates and operates educational programs designed to help give Korean teens attending rural middle schools a head start on deciding their future career path. The programs feature challenging activity-based learning tasks inspired by the variety of fields our four business groups are involved in.

In 2020, the Covid-19 pandemic necessitated that all academy programs be run online. Despite the challenge of transitioning from a team-based to individual-based curriculum on short notice, we felt the investment and effort was worth it to help address the growing lack of educational resources available to Korea's rural schools. All lessons were streamed live during a regular class period to facilitate student participation. An assistant instructor was also available online during each lesson to answer student questions and take feedback via live chat, further enhancing both school and student satisfaction with the new program.

### Pursuing sustainable value

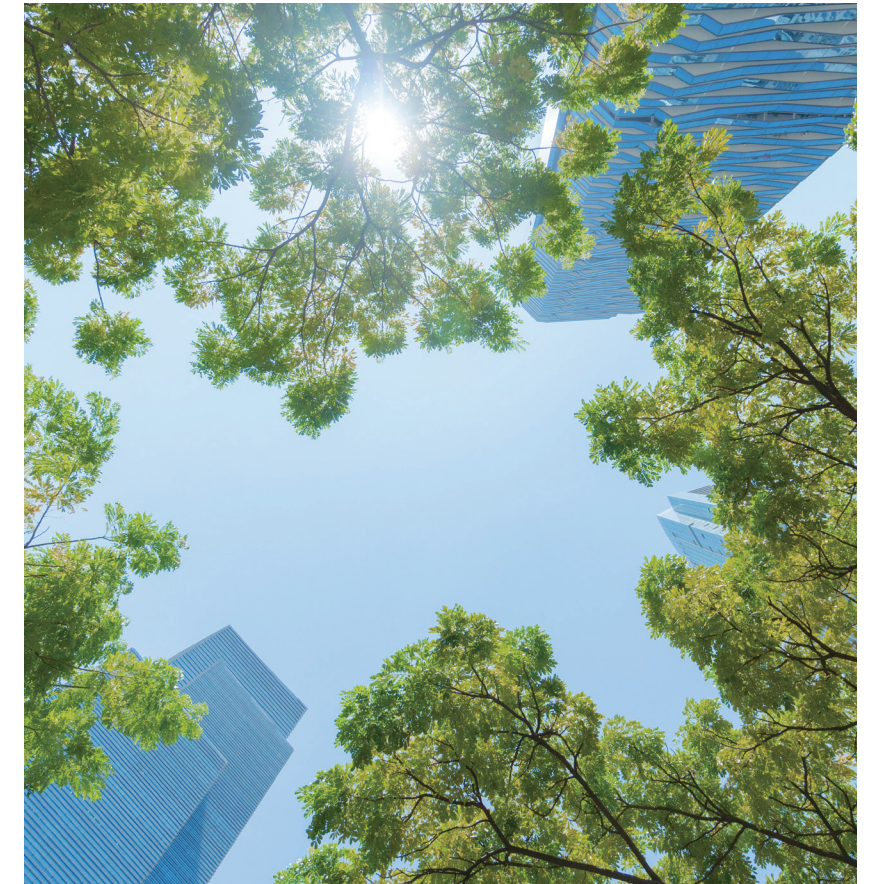
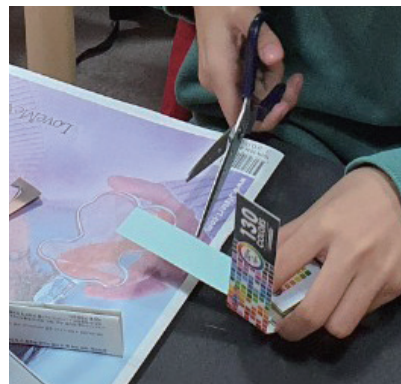
We are actively engaging with a wide spectrum of stakeholders as we pursue our mission to create sustainable value.

#### Sustainable Management Recognition

Over the past decade, we have made significant progress in deeply integrating sustainable principles and practices across our organization. We are particularly proud that our sustainability efforts have earned us a place on the Dow Jones Sustainability World Index since 2017.

As part of our climate change response, we have disclosed our carbon emissions since 2012. These efforts have earned us recognition from CDP, formerly the Carbon Disclosure Project, which has named us a member of the CDP Hall of Fame since 2016 and the Hall of Fame Platinum Club since 2019.

Finally and equally significant, our environmental, social, and corporate governance efforts have earned us an overall ESG score of "A" in annual assessments conducted by Korea Corporate Governance Service (KCGS) since 2016.



## Global Network

### Headquarters

#### Samsung C&T Corporation

123 Olympic-ro 35-gil, Songpa-gu, Seoul, 05510, Republic of Korea  
Tel: 82-2-2145-2114

### Americas

#### Americas Regional Headquarters

105 Challenger Road 3rd Floor, Ridgefield Park, NJ 07660, USA  
Tel: 1-201-229-5000

#### Brazil

##### SÃO PAULO

#### Samsung C&T Do Brasil Ltda.

Rua Henri Dunant, 1383-Diamond Tower 13th Fl. 04709-111, Santo Amaro, São Paulo S.P, Brazil  
Tel: 55-11-5187-6680

#### Canada

##### TORONTO

#### Samsung Renewable Energy Inc.

2050 Derry Road West, 2nd Floor, Mississauga, On L5N 0B9, Canada  
Tel: 1-905-501-5654

#### Chile

##### SANTIAGO

#### Samsung C&T America Inc., Santiago Office

Rosario Norte 555, Oficina 602, Edificio Neruda, Las Condes, Santiago, Chile  
Tel: 56-2-2570-3256

#### Colombia

##### BOGOTA

#### Samsung C&T America Inc., Bogota Office

Carrera 7 No. 113-43, Oficina 1107 Torre Samsung, Bogota, Colombia  
Tel: 57-1-703-6855

#### México

##### MÉXICO CITY

#### Samsung C&T America, Inc. Oficina de Representacion en México

Av. Mariano Escobedo No. 476, Piso 10, Oficina 1001, Colonia Nueva Anzures, México D.F., C.P. 11590, México  
Tel: 52-55-4162-2000

#### MANZANILLO

#### Terminal KMS de GNL, S. de R.L. de C.V.

Carretera Campos Cuyutlan 7Km. Manzanillo Colima, C.P. 28809, México  
Tel: 52-314-331-3400 (1700)

#### QEURETARO

##### QSSC S.A. de C.V.

Av. Industria de la Construcción 632, Parque Industrial Querétaro, Querétaro, Qro. C.P. 76220, México  
Tel: 52-442-101-4902

#### Panama

##### PANAMA

#### Samsung C&T America Inc., Panama

##### Office

P.O. BOX 0833-0041, Punta Pacifica, Torres De Las Americas, Torres C, Piso 22, Oficina 2201, Panama City, Republic Of Panama  
Tel: 507-306-4100 (4148)

#### Peru

##### LIMA

#### Samsung C&T America Inc., Lima Office

Calle Amador Merino Reyna Nr. 295, Oficina 202B, Edificio Plaza Las Americas, San Isidro, Lima, Peru  
Tel: 51-1-221-4990

#### USA

##### NEW JERSEY

#### Samsung C&T America, Inc.

105 Challenger Road 3rd Floor, Ridgefield Park, NJ 07660, USA  
Tel: 1-201-229-5000

#### LOS ANGELES

#### Samsung C&T America, Inc. L.A. Office

5601 E. Slauson Avenue, Suite 101, Commerce, CA 90040, USA  
Tel: 1-323-374-6300

#### Flowfy Commerce Service, LLC

5601 E. Slauson Avenue, Suite 101, Commerce, CA 90040, USA  
Tel: 1-213-507-2269

#### HOUSTON

#### Samsung C&T America, Inc. Houston Office

2050 W Sam Houston Parkway South, Suite 1720, Houston, TX 77042, USA  
Tel: 1-713-554-7989

#### MIDLAND

#### Samsung C&T Oil & Gas Parallel Corp.

1004 Big Spring Street, Midland, TX 79701, USA  
Tel: 1-432-688-3623

## EUROPE, AFRICA & MIDDLE EAST

#### Europe, Africa & Middle East Regional Headquarters

Am Kronberger Hang 6, 65824, Schwalbach Am Taunus, Germany  
Tel: 49-6196-66-5500

#### Egypt

##### CAIRO

#### Samsung C&T Corporation Cairo Office

67, 90th Street, The Address Building, New Cairo, Cairo, Egypt  
Tel: 20-2-2537-1077

#### Germany

##### FRANKFURT

#### Samsung C&T Deutschland GmbH

Am Kronberger Hang 6, 65824, Schwalbach Am Taunus, Germany  
Tel: 49-6196-66-5500

#### Ghana

##### ACCRA

#### Samsung C&T Corporation Accra Office

2nd Floor, Icon House, Plot Number 215, South Liberation Road, Airport City, Accra, Ghana  
Tel: 233-302-744-444

#### Italy

##### MILAN

#### Samsung C&T Deutschland GmbH Milan Office

Viale Vittorio Veneto 2, 20124 Milan, Italy  
Tel: 39-02-9218-8242

#### Kazakhstan

##### ALMATY

#### Samsung C&T Deutschland GmbH

##### Almaty Office

Al-Farabi Ave. 7, Business Center “Nurly Tau”, Block 4A, 15th Floor, 73 Office, Almaty, 050020, Kazakhstan  
Tel: 7-727-311-0291

#### Kenya

##### NAIROBI

#### Samsung C&T Corporation Nairobi Office

Ground Floor, Wing A, West End Towers, Waiyaki Way, Nairobi, Kenya (P.O. Box 1750-00600)  
Tel: 254-204-294-601

#### Romania

##### TARGOVISTE

#### SC Otelinox S.A.

Gaesti Street No.16, Targoviste, 130087 Romania  
Tel: 40-245-209-103

#### Russia

##### MOSCOW

#### Samsung C&T Deutschland GmbH

##### Moscow Office

125009, 5th Floor, Vozdvizhenka 10, Moscow, Russia  
Tel: 7-495-797-2535

#### Saudi Arabia

##### RIYADH

#### Samsung C&T Corporation Riyadh Office

Al-Mashal Building, 2nd Floor, Office #2, King Fadh Road, Block No. 425, P.O. Box 69635, Riyadh 11557, Saudi Arabia  
Tel: 966-11-462-7641

#### JEDDAH

#### Samsung C&T Corporation Jeddah Office

P.O. Box 9484-21413, Ali Reza Tower, 11th Floor, Madinah Road, Sharafiyah, Jeddah, Saudi Arabia  
Tel: 966-12-653-4848

#### Senegal

##### DAKAR

#### Samsung C&T Dakar Office

2 Voies De Sipres En Face Du Samu Municipal, Immeuble Soda Marieme, 2ème étage, Porte Gauche, Senegal  
Tel: 221-33-867-88-40

#### Slovakia

##### VODERADY

#### POSS-SLPC S.R.O.

Voderady 405, Voderady 919 42, Slovakia  
Tel: 421-33-591-3120

#### South Africa

##### JOHANNESBURG

#### Samsung C&T Corporation

##### Johannesburg Office

Ground Floor, Building 2, 2929 William Nicol Drive, Bryanston, Johannesburg, South Africa  
Tel: 27-11-036-6900

#### Spain

##### MADRID

#### Samsung C&T Deutschland GmbH

##### Sucursal en España

Avenida De La Vega 1, Edificio Veganova, Bloque 3, Planta 1, 28108 Alcobendas (Madrid), Spain  
Tel: 34-91-484-0511

#### Turkey

##### ISTANBUL

#### Samsung C&T Deutschland GmbH

##### Istanbul Office

Torun Center, Kat:14 D-Blok, 34394, Büyükdere Cad. No. 74 Mecidiyeköy, Istanbul, Turkey  
Tel: 90-212-216-0877

#### UAE

##### DUBAI

#### Samsung C&T Corporation Dubai Office

Office 1701, 17th Floor, Arenco Tower, Media City, P.O. Box 4246, Dubai, UAE  
Tel: 971-4-270-7101

#### UK

##### LONDON

#### Samsung C&T U.K. Ltd.

Samsung House, 3 Riverbank Way, Great West Road, Brentford, London, Tw8 9Re, UK  
Tel: 44-20-8232-3200

#### Ukraine

##### KIEV

#### Samsung C&T Deutschland GmbH Kiev Office

57, Ul. Lva Tolstogo, 101 Tower, Floor 23, Kiev 01034, Ukraine  
Tel: 38-044-390-5335

#### Uzbekistan

##### TASHKENT

#### Samsung C&T Deutschland GmbH

##### Tashkent Office

11th Floor, Block A, 107-B, Amir Timur Ave., Tashkent, 100084, Uzbekistan  
Tel: 998-71-238-9432

### CHINA

#### China Regional Headquarters

10th Floor, HNA Tower (Haihang), No. 898, Puming Road, Pudong New Area, Shanghai, China

Tel: 86-21-2231-4000

#### China

##### SHANGHAI

#### Samsung Trading (Shanghai) Co., Ltd. Shanghai Office

10th Floor, HNA Tower (Haihang), No. 898, Puming Road, Pudong New Area, Shanghai, China  
Tel: 86-21-2231-4000

#### GUANGZHOU

#### Samsung Trading (Shanghai) Co., Ltd. Guangzhou Office

Unit 4605-4606, Office Tower, Citic Plaza, No. 233 Tianhebei Road, Guangzhou, China  
Tel: 86-20-3891-1281 (210)

#### XI’AN

#### Samsung Trading (Shanghai) Co., Ltd.

##### Xi’an Office

Office No. 204, A2 Bonded Warehouse, CBZ, 1390 Zonger Road, High-tech Zone, Xi’an City, Shaanxi Province, China  
Tel: 86-029-8111-3517

#### HONG KONG

#### Samsung C&T Hong Kong Limited

8th Floor, Central Plaza, 18 Harbour Road, Wanchai, Hong Kong  
Tel: 852-2862-6013

#### PINGHU

#### Samsung Precision Stainless Steel

##### (Pinghu) Co., Ltd.

2318, Xinming Road, Pinghu City, Zhejiang, China (314200)  
Tel: 86-573-8507-7660

#### Mongolia

##### ULAANBAATAR

#### Erdsam International Co., Ltd.

Unit 604, Central Tower Office Building, Sukhbaatar Square 2, 14200, 8th Khoroo, Sukhbaatar District, Ulaanbaatar City, Mongolia  
Tel: 976-11-314-564

#### Taiwan

##### TAIPEI

#### Samsung C&T Taiwan Corporation

Room 2203, International Trade Building, No. 333, Keelung Road, Sec. 1, Taipei 110, Taiwan  
Tel: 886-2-2728-8510

## SOUTHEAST ASIA & OCEANIA

#### Southeast Asia & Oceania Regional Headquarters

L07-09 Vincom Center Dong Khoi, 72 Le Thanh Ton & 45A Ly Tu Trong, District 1, Ho Chi Minh City, Vietnam  
Tel: 84-28-3535-1840

#### Australia

##### SYDNEY

#### Samsung C&T Australia

Suite 2506, Lv 25, 2 Park Street, Sydney, NSW 2000, Australia  
Tel: 61-2-8267-1000

#### Indonesia

##### JAKARTA

#### Samsung C&T Corporation Jakarta Office

Gedung The Energy, 26 Floor, Jl. Jend. Sudirman, Lot 11 A, SCBD Kav 52-53, Jakarta 12190 Indonesia  
Tel: 62-21-2995-0170

#### PEKANBARU

##### S&G Biofuel Pte. Ltd.

PT. Gandaerah Hendana, PT. Inecda, Mega Asri Green Office, Block B2-8, Jl. Arifin Ahmad, Pekanbaru, Riau, Indonesia  
Tel: 62-761-859-774

#### RIAU

##### S&G Biofuel Pte. Ltd. - PT. Gandaerah

##### Hendana

PT. Gandaerah Hendana, PT. Inecda, Mega Asri Green Office, Block B2-8, Jl. Arifin Ahmad, Pekanbaru, Riau, Indonesia  
Tel: 62-761-859-774

##### S&G Biofuel Pte. Ltd. - PT. Inecda

PT. Gandaerah Hendana, PT. Inecda, Mega Asri Green Office, Block B2-8, Jl. Arifin Ahmad, Pekanbaru, Riau, Indonesia  
Tel: 62-761-859-774

#### Malaysia

##### KUALA LUMPUR

#### Samsung C&T Malaysia Sdn. Bhd.

Suite W-08-02, Level 8, West Wing, The Icon, No. 1, Jalan 1/68f, Jalan Tun Razak, 55000 Kuala Lumpur, Malaysia  
Tel: 60-3-2161-5133

#### KLANG

##### MSSC Sdn. Bhd.

Pt 17244, 4th Mill, Jalan Sekolah Off Jalan Kapar, 42100 Rantau Panjang, Klang, Selangor, Malaysia  
Tel: 60-3-3291-4342

#### Myanmar

##### YANGON

#### Samsung C&T Corporation Yangon Office

New Excellent Condominium, Room No. 5C, No. 46, Pantra Road, Dagon Township, Yangon, Myanmar  
Tel: 95-1-378-505

#### Philippines

##### MANILA

#### Samsung C&T Corporation Manila

##### Regional Office

20th Floor, BDO Equitable Tower, 8751 Paseo De Roxas Street, Makati City, Metro Manila, Philippines 1226  
Tel: 63-2-815-2937

#### Star World Corporation Ltd.

CPIP Admin. Building, Brgy. Batino, Calamba City, Laguna, Philippines 4207  
Tel: 63-49-543-0894

#### Singapore

##### SINGAPORE

#### Samsung C&T Singapore Pte. Ltd.

3 Church Street, #21-02, Samsung Hub Building, Singapore 049483  
Tel: 65-6550-8300

#### Thailand

##### BANGKOK

#### Samsung C&T (Thailand) Co., Ltd.

21st Floor, Lake Rajada Office Complex, 193/90 Rachadapisek Road, Khet Klongtoey, Bangkok 10110, Thailand  
Tel: 66-2-264-0527

#### Vietnam

##### HANOI

## Make the value yours

Thank you again for your interest in Samsung C&T.

We look forward to the opportunity to talk with you soon and explore how we can together open profitable new frontiers of value in chemicals, steel, energy, materials, and new businesses for your customers and markets.

## Financial Statements

### Financial Position<sup>1</sup>

USD thousands

|   | 2020       | 2019       |
|---|------------|------------|
| <b>Total assets</b>                             | 49,937,261 | 42,192,570 |
| Current assets                                  | 11,857,131 | 10,803,028 |
| Cash and cash equivalents                       | 2,208,149  | 2,485,670  |
| Trade and other receivables                     | 4,667,729  | 4,016,299  |
| Inventories                                     | 1,855,940  | 1,743,917  |
| Non-current assets                              | 38,080,130 | 31,389,542 |
| Property, plant and equipment                   | 4,458,880  | 4,527,600  |
| <b>Total liabilities</b>                        | 19,656,487 | 17,659,394 |
| Current liabilities                             | 10,007,775 | 10,045,366 |
| Account payable - trade                         | 1,839,294  | 1,432,067  |
| Short-term borrowings                           | 1,304,746  | 1,771,353  |
| Non-current bonds payable & longterm borrowings | 650,198    | 722,227    |
| Accounts payable                                | 685,835    | 690,758    |
| Non-current liabilities                         | 9,648,712  | 7,614,028  |
| Bonds payable & longterm borrowings             | 936,296    | 647,349    |
| <b>Total shareholders' equity</b>               | 30,280,774 | 24,533,177 |
| Share capital                                   | 17,327     | 17,584     |

### Key Ratios

|                    | 2020    | 2019    |
|--------------------|---------|---------|
| ROA                | 2.32%   | 2.37%   |
| ROE                | 3.81%   | 4.77%   |
| Net income/Revenue | 3.84%   | 3.41%   |
| Current ratio      | 118.48% | 107.54% |
| Liability/Equity   | 64.91%  | 71.98%  |
| Debt/Equity        | 9.55%   | 12.80%  |
| Net debt/Equity    | -1.24%  | 0.19%   |



Samsung C&T Corporation

123, Olympic-ro 35-gil, Songpa-gu, Seoul, 05510, Republic of Korea

Tel. 82-2-2145-2114 Fax. 82-2-2145-3114

[www.samsungcnt.com](http://www.samsungcnt.com)



# Financial Statements

## Financial Position <sup>1</sup>

USD thousands

|   | 2020       | 2019       |
|---|------------|------------|
| <b>Total assets</b>                             | 49,937,261 | 42,192,570 |
| Current assets                                  | 11,857,131 | 10,803,028 |
| Cash and cash equivalents                       | 2,208,149  | 2,485,670  |
| Trade and other receivables                     | 4,667,729  | 4,016,299  |
| Inventories                                     | 1,855,940  | 1,743,917  |
| Non-current assets                              | 38,080,130 | 31,389,542 |
| Property, plant and equipment                   | 4,458,880  | 4,527,600  |
| <b>Total liabilities</b>                        | 19,656,487 | 17,659,394 |
| Current liabilities                             | 10,007,775 | 10,045,366 |
| Account payable - trade                         | 1,839,294  | 1,432,067  |
| Short-term borrowings                           | 1,304,746  | 1,771,353  |
| Non-current bonds payable & longterm borrowings | 650,198    | 722,227    |
| Accounts payable                                | 685,835    | 690,758    |
| Non-current liabilities                         | 9,648,712  | 7,614,028  |
| Bonds payable & longterm borrowings             | 936,296    | 647,349    |
| <b>Total shareholders' equity</b>               | 30,280,774 | 24,533,177 |
| Share capital                                   | 17,327     | 17,584     |

## Key Ratios

|                    | 2020    | 2019    |
|--------------------|---------|---------|
| ROA                | 2.32%   | 2.37%   |
| ROE                | 3.81%   | 4.77%   |
| Net income/Revenue | 3.84%   | 3.41%   |
| Current ratio      | 118.48% | 107.54% |
| Liability/Equity   | 64.91%  | 71.98%  |
| Debt/Equity        | 9.55%   | 12.80%  |
| Net debt/Equity    | -1.24%  | 0.19%   |

\* Based on K-IFRS consolidated financial statements

<sup>1</sup> USD figures are based on the KRW-USD exchange rate of 1,088.00 as of Dec. 31, 2020.

# Financial Statements

## Income Statement <sup>2</sup>

USD thousands

|                                  | 2020       | 2019       |
|----------------------------------|------------|------------|
| Revenue                          | 25,605,795 | 26,067,964 |
| Gross profit                     | 2,851,9861 | 3,222,600  |
| Operating profit                 | 726,308    | 734,520    |
| Profit before income tax         | 1,241,604  | 1,293,642  |
| Net profit                       | 983,5615   | 888,005    |
| <b>Revenue by Group</b>          |            |            |
| Engineering & Construction       | 9,916,492  | 9,874,492  |
| Trading & Investment             | 11,229,679 | 11,746,673 |
| Fashion                          | 1,309,700  | 1,467,857  |
| Resort                           | 2,163,824  | 2,384,399  |
| BIO (L)                          | 986,100    | 594,544    |
| <b>Operating profit by Group</b> |            |            |
| Engineering & Construction       | 450,243    | 457,305    |
| Trading & Investment             | 79,226     | 90,000     |
| Fashion                          | (30,240)   | 27,371     |
| Resort                           | 17,722     | 120,856    |
| BIO (L)                          | 209,357    | 38,988     |
| <b>Operating margin by Group</b> |            |            |
| Engineering & Construction       | 4.5%       | 4.6%       |
| Trading & Investment             | 0.7%       | 0.8%       |
| Fashion                          | -2.3%      | 1.8%       |
| Resort                           | 0.8%       | 5.1%       |
| BIO (L)                          | 21.2%      | 6.6%       |

## Cash Flows <sup>3</sup>

USD thousands

|                                      | 2020      | 2019       |
|--------------------------------------|-----------|------------|
| Cash at the beginning of the period  | 2,485,670 | 2,668,693  |
| Cash flows from operating activities | 1,165,346 | 708,501    |
| Cash flows from investing activities | -779,738  | 558,033    |
| Cash flows from financing activities | -566,454  | -1,481,944 |
| Net increase/decrease in cash        | -180,846  | -215,409   |
| Cash at the end of the period        | 2,208,149 | 2,485,670  |

\* Based on K-IFRS consolidated financial statements

<sup>2</sup> USD figures are based on the average 2020 KRW-USD exchange rate of 1,180.05.

<sup>3</sup> USD figures are based on the KRW-USD exchange rate of 1,088.00 as of Dec. 31, 2020.